

DOOR SCHEDULE					
SYMBOL	WIDTH	HEIGHT	HEADER	NOTES	QUANTITY
①	3'-0"	6'-8"	(2)2"x8"	INSULATED DOOR	1
②	3'-0"	6'-8"	(2)2"x8"	20 MIN. INSULATED DOOR	1
③	3'-0"	6'-8"	(2)2"x8"	INSULATED DOOR/HALF LITE	1
④	3'-0"	6'-8"		INTERIOR DOOR	1
⑤	2'-8"	6'-8"		INTERIOR DOOR	3
⑥	2'-6"	6'-8"		INTERIOR DOOR	4
⑦	2'-6"	6'-8"		POCKET DOOR	2
⑧	1'-8"	6'-8"		INTERIOR DOOR	1
⑨	PR-3'-0"	6'-8"		BI-PASS DOORS	2
⑩	PR-3'-0"	6'-8"	(2)9'-1/2"LVLS	SLIDING GLASS PATIO / INSULATED	1
⑪	9'-0"	8'-0"	(2)9'-1/2"LVLS	OVERHEAD DOOR	1
⑫	16'-0"	8'-0"	(3)11'-7/8"LVLS	OVERHEAD DOOR	1

WINDOW SCHEDULE						
SYMBOL	SIZE	MATERIAL	TYPE	HEADER	COMMENTS	QUANTITY
①	3o5o	VINYL	SINGLE-HUNG	(2)2"x8"	INSULATING	10
②	2o3o	VINYL	SLIDER	(2)2"x8"	INSULATING	1
③	3o1o	VINYL	SLIDER	(2)2"x8"	INSULATING-OBSCURE	2

Buyer Approved: _____
Date: _____

GENERAL NOTES:

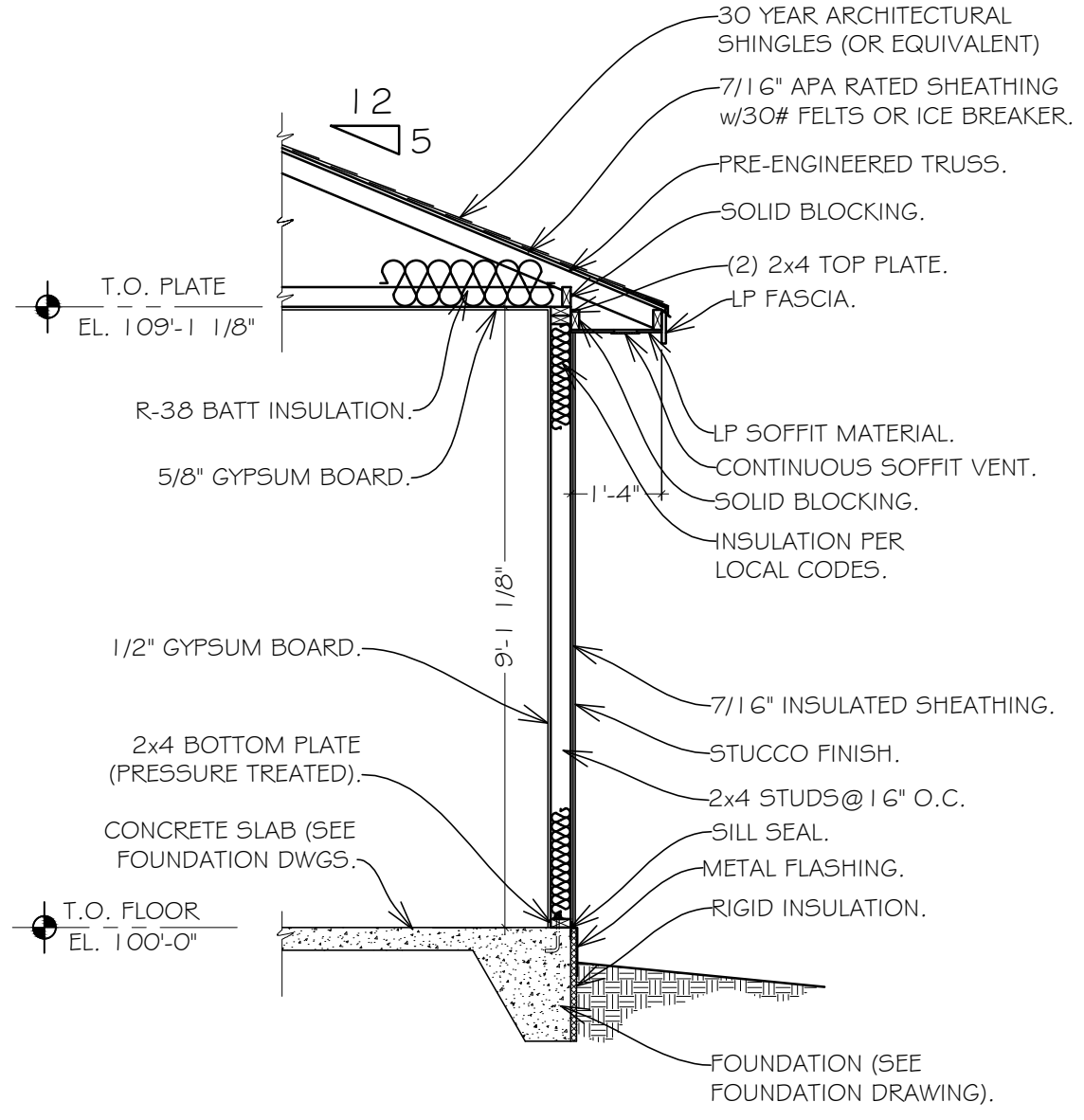
EXTERIOR DOORS: 1-3/4" INSULATED PRE-HUNG VINYL CLAD or WD (PRE-BORED FOR LOCKS & DEADBOLT)
 INTERIOR DOORS: 1-3/8" PRE-HUNG HOLLOW CORE WOOD. LEVER-TYPE LOCKSETS, DOORS & HARDWARE AS APPROVED BY OWNER.
 OVERHEAD DOOR: 1-3/4" INSUL. ROLL-TYPE DOORS w/TRACK, GUIDES, AUTO OPEN & LOCKS.
 EXTERIOR WINDOWS: INSULATING VINYL, LOW "E" GLAZING, U-VALUE CERTIFIED.
 CLOSETS: 1-16" PAINTED SHELF, 1- METAL POLE, SHELF @ 68" A.F.F. CONFIGURATION BY CONTRACTOR.
 BATH: LAVATORY SINK BASIN, T.P. HOLDER, ROBE HOOK ON DOOR (PRIMARY), TOWEL BARS (1-24", 1-36").
 KITCHEN & BATH CABINET & CTR. TOP DESIGN BY OTHERS.
 EXTERIOR FINISH as NOTED ON PLAN, DRYWALL INTERIOR FINISH MOISTURE-RESISTANT DRYWALL "GREENBOARD" IN BATHS & SINK. PROVIDE GUTTER & DOWNSPOUT SYSTEM TO PROVIDE POSITIVE DRAINAGE AWAY FROM STRUCTURE.
 DO NOT SCALE DRAWINGS. DIMENSIONS TAKE PRECEDENCE OVER SCALE; LARGER SCALE OVER SMALLER SCALE, & DETAILS OVER NOTES. GEN'L CONTRACTOR & SUB-CONTRACTORS SHALL VERIFY DRAWINGS & SITE CONDITIONS BEFORE COMMENCEMENT OF THE WORK. ANY DISCREPANCY IN THE DRAWINGS OR DOCUMENTS SHALL BE BROUGHT TO THE ATTENTION OF THE ARCHITECT/ENGINEER PRIOR TO COMMENCEMENT OF THE WORK. ALL WORK SHALL COMPLY WITH THE MOST CURRENT ADOPTED I.R.C., STATE ENERGY CODE, & LOCAL BLDG. DEPT. REQMNTs. PRE-MANUFACTURED FLR. & ROOF TRUSSES AS APPROVED BY THE ARCHITECT/ENGINEER. ATTIC SPACE VENTILATION PER I.R.C. R806.

ELECTRICAL NOTES:

ELECTRICAL CONTRACTOR TO SUPPLY ALL LABOR & MATERIAL TO PERFORM THE WORK PER APPLICABLE GOVERNING CODE (NEC & LOCAL). THE WORK SHALL INCLUDE: PANLITES, SWITCHES, MOTORS, RECESSED LIGHTS, SMOKE & CO2 ALARMS, OUTLETS, PANELS, BREAKERS, POWER & LIGHTING. OWNER SELECTION OF FINISHES (COLOR & TYPE) BEFORE INSTALLATION.

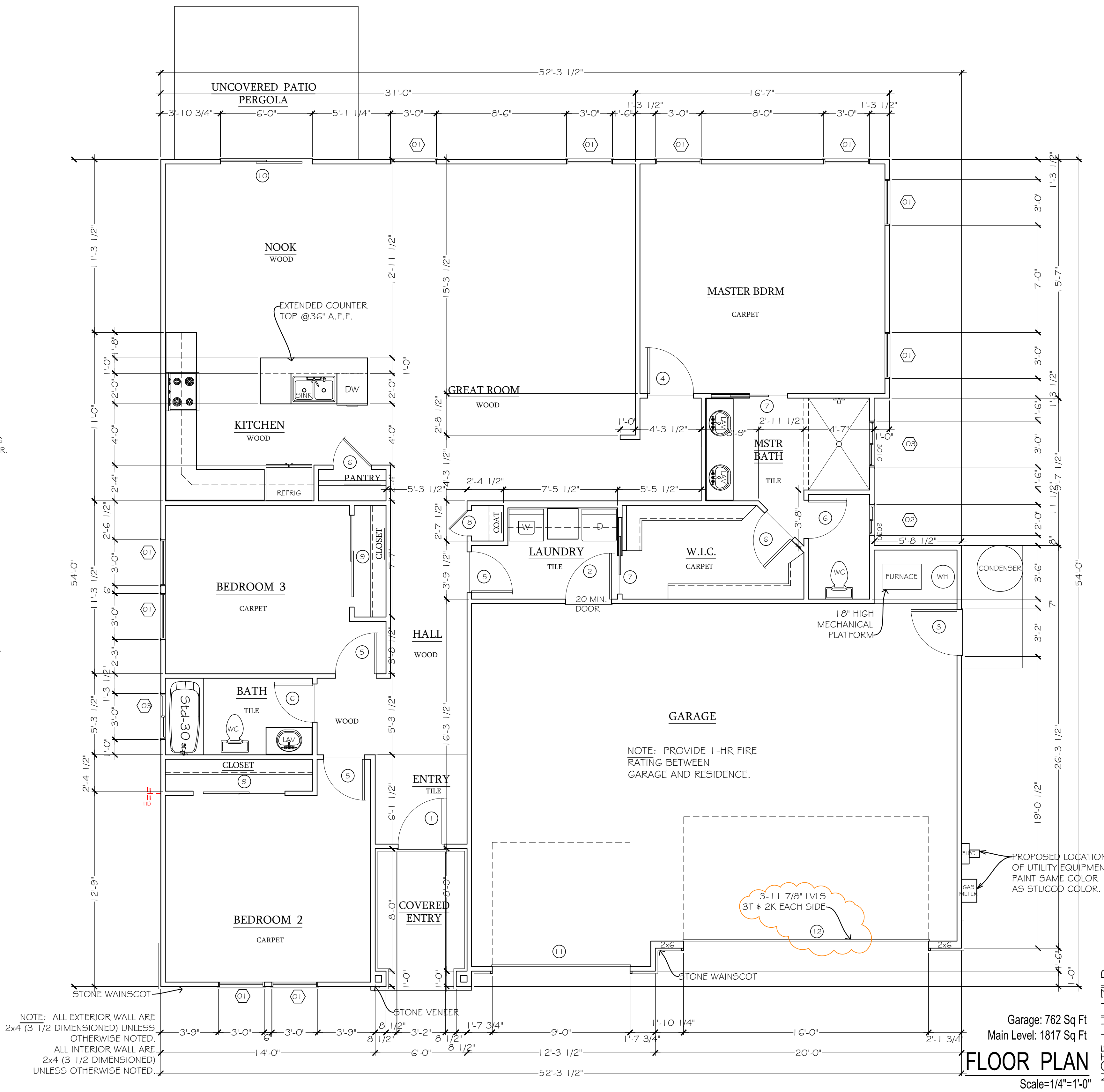
MECHANICAL:

MECHANICAL CONTRACTOR TO SUPPLY ALL LABOR & MATERIAL TO PERFORM THE WORK PER APPLICABLE GOVERNING CODES (UMC, UPC, & LOCAL). THE WORK INCLUDES: 50 GALLON GAS-FIRED WTR. HTR, AIR-CONDITIONING, VENTING, MAKE-UP AIR FOR EXHAUST FANS, WATER CLOSETS, TUB & ENCLOSURE, SHOWER, SHOWER PAN OR ENCLOSURE & LAVs. FORCED-AIR HEAT SYSTEM & FURNACE STAINLESS STEEL DOUBLE SINK w/GARBAGE DISPOSAL, ICE-MAKING CONNECTION (FOR REFRIGERATOR), UNDER-COUNTER DISHWASHER.



TYPICAL WALL SECTION
Scale=3/8"=1'-0"

CONSTRUCTION DOCUMENTS



Garage: 762 Sq Ft
Main Level: 1817 Sq Ft
FLOOR PLAN
Scale=1/4"=1'-0"

DISCLAIMER: This plan is not 100% to scale as internal dimensions may vary however total square footage shown on this plan is for informational purposes only. Buyer agrees to verify all dimensions and specifications on site prior to construction. No responsibility is assumed for any errors or omissions. Buyer agrees to indemnify and hold the architect/engineer harmless from and against all claims, damages, and expenses, including reasonable attorneys' fees, arising from or due to any such errors or omissions, whether or not such claims, damages, and expenses are caused in whole or in part by the negligence of the architect/engineer.

INTEGRITY HOMES
 Phone: 970-255-6520 Fax: 970-255-1017
 1380 North Ave.
 Grand Junction, CO 81501

241 ESPERANZA CT.
 THE AMBER
 CRYSTAL BROOKE SPEC
 GRAND JUNCTION, CO

GOLD Inclusions

Revisions
 DATE/REVISION

Phase CD Date 19-AUG-2020 Drawn by: EG

FLOOR PLAN

A1

NOTE: 1/4" x 1/4" Drawings are printed at Half Scale.