

DOOR SCHEDULE					
SYMBOL	WIDTH	HEIGHT	HEADER	NOTES	QUANTITY
1	3'-0"	6'-8"	(2)2"x8"	INSULATED DOOR	1
2	3'-0"	6'-8"	(2)2"x8"	INSULATED DOOR HALF LITE	1
3	3'-0"	6'-8"	(2)2"x8"	20 MIN. INSULATED DOOR	1
4	3'-0"	6'-8"		INTERIOR DOOR	2
5	2'-8"	6'-8"			4
6	2'-6"	6'-8"			1
7	2'-4"	6'-8"			3
8	2'-0"	6'-8"			3
9	PR-2'-6"	6'-8"		BI-PASS DOOR	1
10	PR-3'-0"	6'-8"		BI-PASS DOOR	2
11	PR-3'-0"	6'-8"	(2)9'-1/2"LVL5	FRENCH DOORS / INSULATED	1
12	3'-0"	6'-8"	(2)2"x8"	INSULATED DOOR FULL LITE	1
13	16'-0"	8'-0"	(2)11-7/8"LVL5	OVERHEAD DOOR	1
14	9'-0"	8'-0"	(2)9'-1/2"LVL5	OVERHEAD DOOR	1
15	2'-6"	6'-8"		BARN DOOR	1

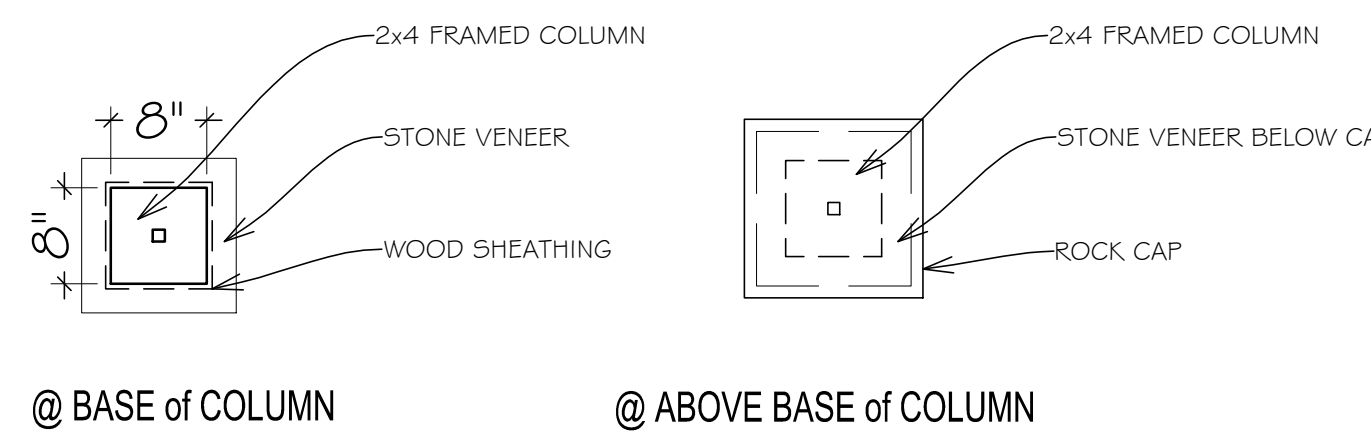
WINDOW SCHEDULE						
SYMBOL	SIZE	MATERIAL	TYPE	HEADER	COMMENTS	QUANTITY
01	5o5o	VINYL	SLIDER	(2)2'x10'	INSULATING	1
02	4o4o	VINYL	SLIDER	(2)2'x8"	INSULATING-EGRESS	2
03	4o4o	VINYL	SINGLE-HUNG	(2)2'x8"	INSULATING-TEMPERED	1
04	3o5o	VINYL	SINGLE-HUNG	(2)2'x8"	INSULATING-EGRESS	6
05	3o4o	VINYL	SINGLE-HUNG	(2)2'x8"	INSULATING	1
06						
07	3o1o	VINYL	SLIDER	(2)2'x8"	INSULATING-OBSOURE	1
08	2o5o	VINYL	SINGLE-HUNG	(2)2'x8"	INSULATING	2
09	3o2o	VINYL	SLIDER	(2)2'x8"	INSULATING	1

GENERAL NOTES:

EXTERIOR DOORS: 1-3/4" INSULATED PRE-HUNG VINYL CLAD OR WD (PRE-BORED FOR LOCKS & DEADBOLT)
 INTERIOR DOORS: 1-3/8" PRE-HUNG HOLLOW CORE WOOD, LEVER-TYPE LOCKSETS, DOORS & HARDWARE AS APPROVED BY OWNER.
 OVERHEAD DOOR: 1-3/4" INSUL. ROLL-TYPE DOORS w/TRACK, GUIDES, AUTO OPEN & LOCKS.
 EXTERIOR WINDOWS: INSULATING VINYL CLAD, LOW 'E' GLAZING U-VALUE CERTIFIED.
 CLOSETS: 1-1/2" PAINTED SHELF, 1- METAL POLE, SHELF @ 68" A.F.F. CONFIGURATION BY CONTRACTOR.
 BATH: LAVATORY SINK BASIN, T.F. HOLDER, ROBE HOOK ON DOOR (PRIMARY), TOWEL BARS (1-24", 1-36").
 KITCHEN & BATH CABINET & CTR. TOP DESIGN BY OTHERS.
 EXTERIOR FINISH AS NOTED ON PLAN, DRYWALL INTERIOR FINISH MOISTURE-RESISTANT DRYWALL "GREENBOARD" IN BATHS & SINK.
 PROVIDE GUTTER & DOWNSPOUT SYSTEM TO PROVIDE POSITIVE DRAINAGE AWAY FROM STRUCTURE. DO NOT SCALE DRAWINGS.
 DIMENSIONS TAKE PRECEDENCE OVER SCALE, LARGER SCALE OVER SMALLER SCALE, & DETAILS OVER NOTES. GEN'L CONTRACTOR & SUB-CONTRACTORS SHALL VERIFY DRAWINGS & SITE CONDITIONS BEFORE COMMENCEMENT OF THE WORK.
 ANY DISCREPANCY IN THE DRAWINGS OR DOCUMENTS SHALL BE BROUGHT TO THE ATTENTION OF THE ARCHITECT/ENGINEER PRIOR TO COMMENCEMENT OF THE WORK.
 ALL WORK SHALL COMPLY WITH THE MOST CURRENT ADOPTED I.R.C., STATE ENERGY CODE, & LOCAL BLDG. DEPT. REGMNTS.
 PRE-MANUFACTURED FLR. & ROOF TRUSSES AS APPROVED BY THE ARCHITECT/ENGINEER.
 ATTIC SPACE VENTILATION PER I.R.C. R806.

ELECTRICAL NOTES:

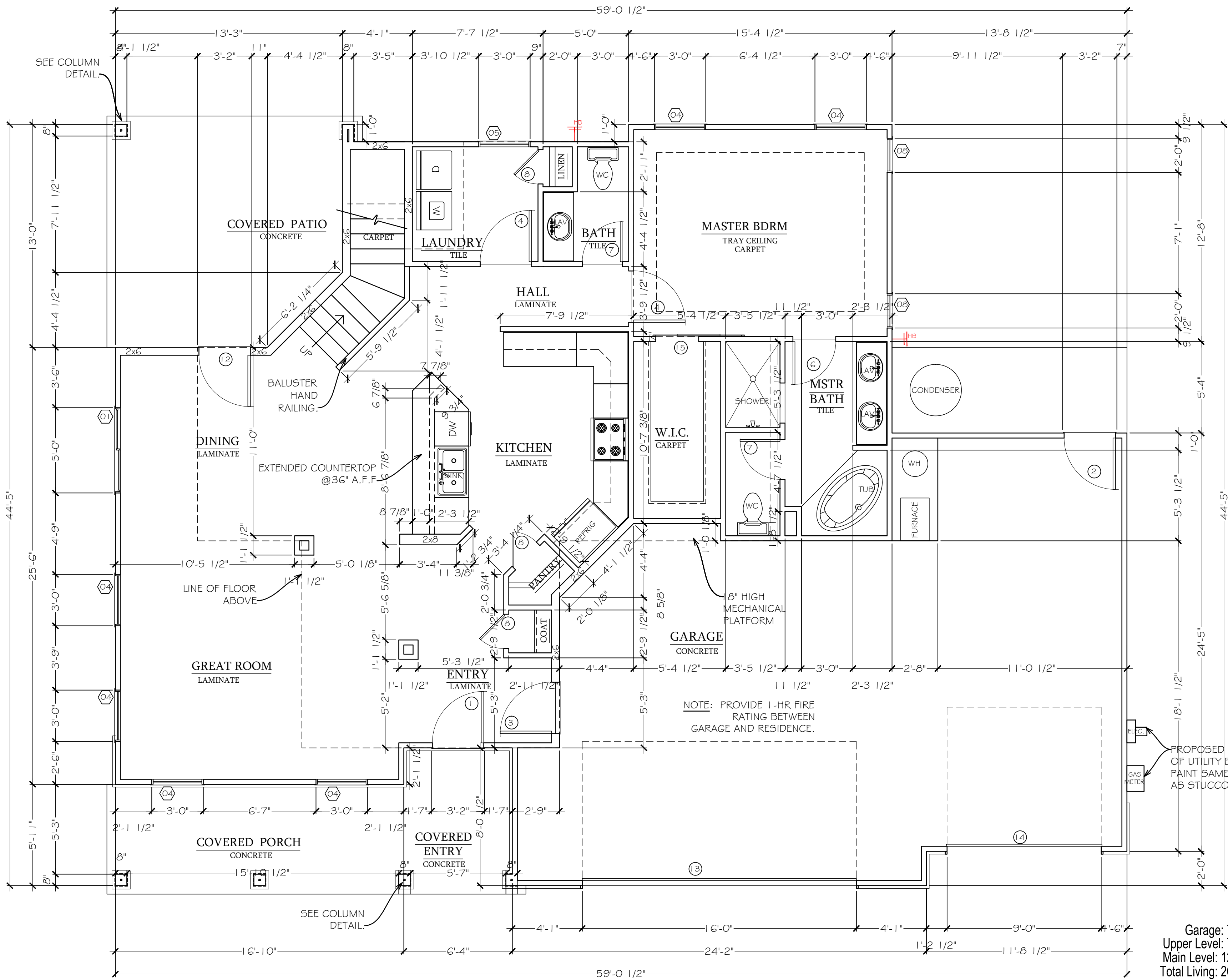
ELECTRICAL CONTRACTOR TO SUPPLY ALL LABOR & MATERIAL TO PERFORM THE WORK PER APPLICABLE GOVERNING CODE (NEC & LOCAL).
 THE WORK SHALL INCLUDE: FANLITES, SWITCHES, MOTORS, RECESSED LIGHTS, SMOKE & CO2 ALARMS, OUTLETS, PANELS, BREAKERS, FOWER & LIGHTING.
 OWNER SELECTION OF FINISHES (COLOR & TYPE) BEFORE INSTALLATION.
 MECHANICAL CONTRACTOR TO SUPPLY ALL LABOR & MATERIAL TO PERFORM THE WORK PER APPLICABLE GOVERNING CODES (UMC, UPC, & LOCAL).
 THE WORK INCLUDES: 50 GALLON GAS-FIRED WTR. HTR, AIR-CONDITIONING, VENTING, MAKE-UP AIR FOR EXHAUST FANS, WATER CLOSETS, TUB & ENCLOSURE, SHOWER, SOWER PAN OR ENCLOSURE & LAVS, FORCED-AIR HEAT SYSTEM & FURNACE STAINLESS STEEL DOUBLE SINK w/GARBAGE DISPOSAL, ICE-MAKING (REFRIGERATOR), UNDER-COUNTER DISHWASHER.



COLUMN DETAIL

Scale=3/4"=1'-0"

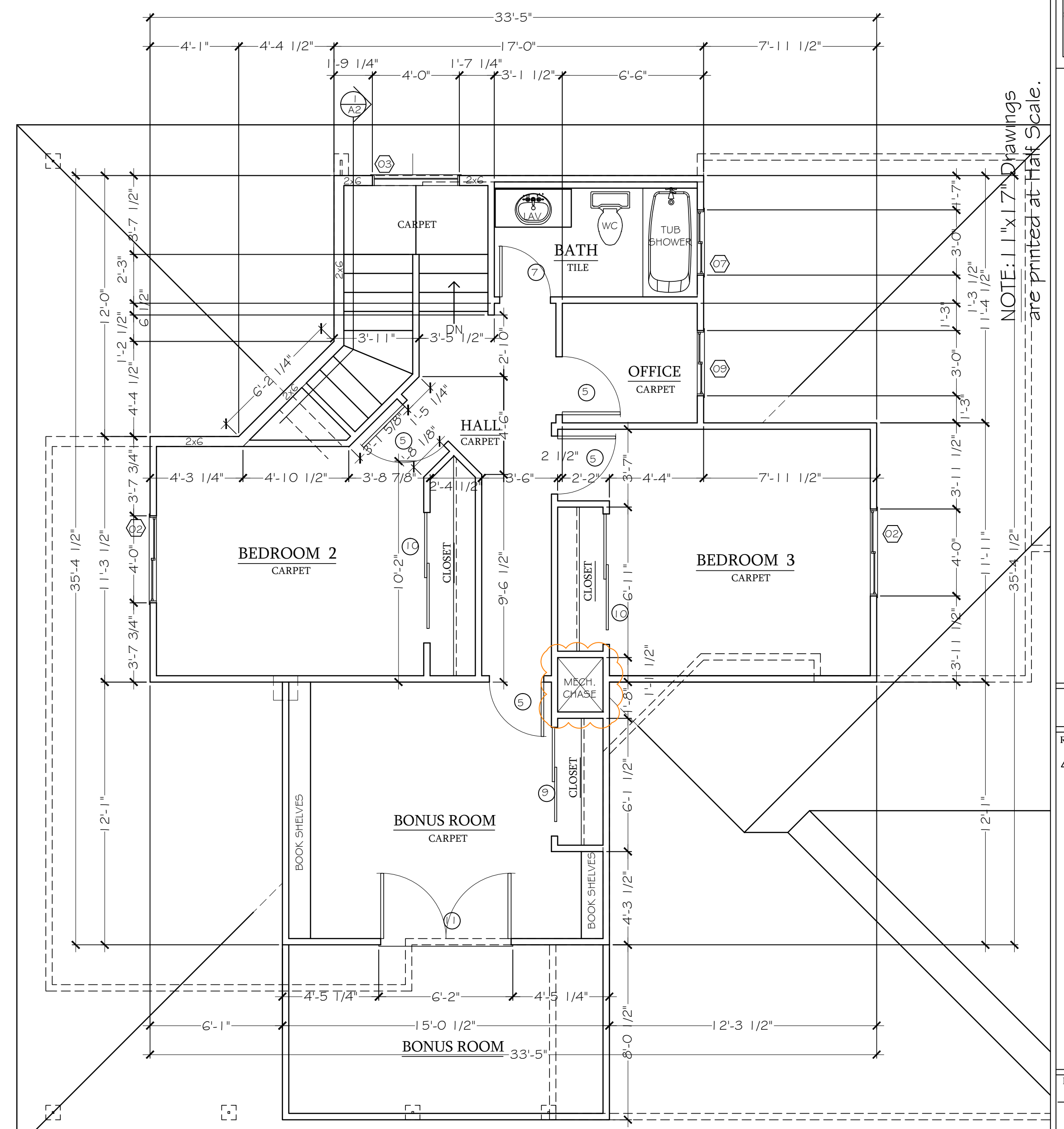
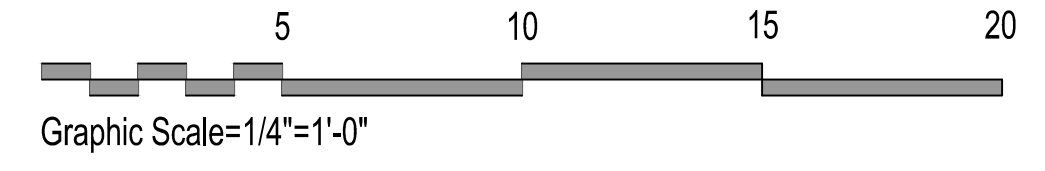
Buyer Approved: _____
 Date: _____



Garage: 752 Sq Ft
 Upper Level: 733 Sq Ft
 Main Level: 1271 Sq Ft
 Total Living: 2004 Sq Ft

FLOOR PLAN

Scale: 1/4"=1'-0"



Second Level: 737 Sq Ft

2nd LEVEL FLOOR PLAN

Scale: 1/4"=1'-0"

CONSTRUCTION DOCUMENTS

INTEGRITY HOMES
 Phone: 970-255-6520 Fax: 970-255-1017
 1380 North Ave.
 Grand Junction, CO 81501

242 Esperanza Ct.
 Casa Zafiro2-Spec.
 Grand Junction, CO

GOLD Inclusions

Revisions
△ Date/Revision Item

Phase	Date	Drawn by
CD	29-DEC-2020	EG

FLOOR PLAN

A1

DISCLAIMER: This plan is not 100% to scale as internal dimensions may vary however total square footage shown correct to Sales Proposal. Any furnishings, fixtures or appliances shown are for effect only and not included.
 COPYRIGHT: This drawing remains the property of Integrity Homes LLC and may be used or reproduced in whole or without written permission.